

SHREWSBURY TOWNSHIP

DRAFT OFFICIAL MAP

JUNE 2021

CERTIFICATE FOR APPROVAL BY THE BOARD OF SUPERVISORS

APPROVED BY THE SHREWSBURY TOWNSHIP BOARD OF SUPERVISORS THIS _____ DAY OF _____, 20____.

CERTIFICATE FOR APPROVAL BY THE PLANNING COMMISSION

REVIEWED BY THE SHREWSBURY TOWNSHIP PLANNING COMMISSION THIS _____ DAY OF _____, 20____.

THIS IS TO CERTIFY THAT THIS IS THE OFFICIAL MAP OF SHREWSBURY TOWNSHIP REFERRED TO IN THE OFFICIAL MAP ORDINANCE (ORDINANCE NO. _____) OF SHREWSBURY TOWNSHIP, YORK COUNTY, PENNSYLVANIA.

Rail Trail Parking Lots

- 1 New Freedom Train Station
- 2 Centerville Parking Lot Address
- 3 Railroad Parking Lot Address

Future Public Facilities in Southern York County

- ▲ Miller Park Expansion, Shrewsbury Township
- ▲ Glen Rock Public Works Expansion, Shrewsbury Township
- ▲ Shrewsbury Municipal Campus Expansion, Shrewsbury Township
- ▲ Windy Hills Park Expansion, Shrewsbury Township
- ▲ Southern York County School District, 195 Acres Bowser Road

Public Recreation Facilities in Southern York County

- 1 Arlington Ernst Park, New Freedom Borough
- 2 Bunker Hill (Joan Davis Community Park), New Freedom Borough
- 3 Charles Sweeney Memorial Park, Shrewsbury Borough
- 4 Freedom Green, New Freedom Borough
- 5 Glenn Rock Dog Park, Shrewsbury Township
- 6 Hametown Park, Shrewsbury Township
- 7 Marge Goodfellow Park, New Freedom Borough
- 8 Miller Family Park, Shrewsbury Township
- 9 Quail Ridge, New Freedom Borough
- 10 Railroad Park, Railroad Borough
- 11 Smith Woods, New Freedom Borough
- 12 Spring Valley, York County Park
- 13 Strawberry Field Ball Park, Shrewsbury Township
- 14 The Coop Baseball Field, New Freedom Borough ; and,
- 15 Veteran's Memorial Park, New Freedom Borough
- 16 Weatherfield Soccer Fields, New Freedom Borough
- 17 Winchester Park, Shrewsbury Township
- 18 Windy Hill Park, Shrewsbury Township
- 19 99 Strassburg Circle, Shrewsbury Township
- 20 Shrewsbury Elementary School
- 21 Southern York County School District Campus
- 22 Fielding Manor Neighborhood Park

Proposed Official Map Features Legend

- Potential Trail Head
- Transportation and Roadway Improvement
- Glen Rock Bypass
- Proposed Pedestrian/Bicycle Trail
- Previously Identified Future Trail Linkages
- Springfield Greenway
- Waterway Easement 100' from top of Bank
- Potential Public Facility Expansion
- Non-recreational Township Owned Parcels

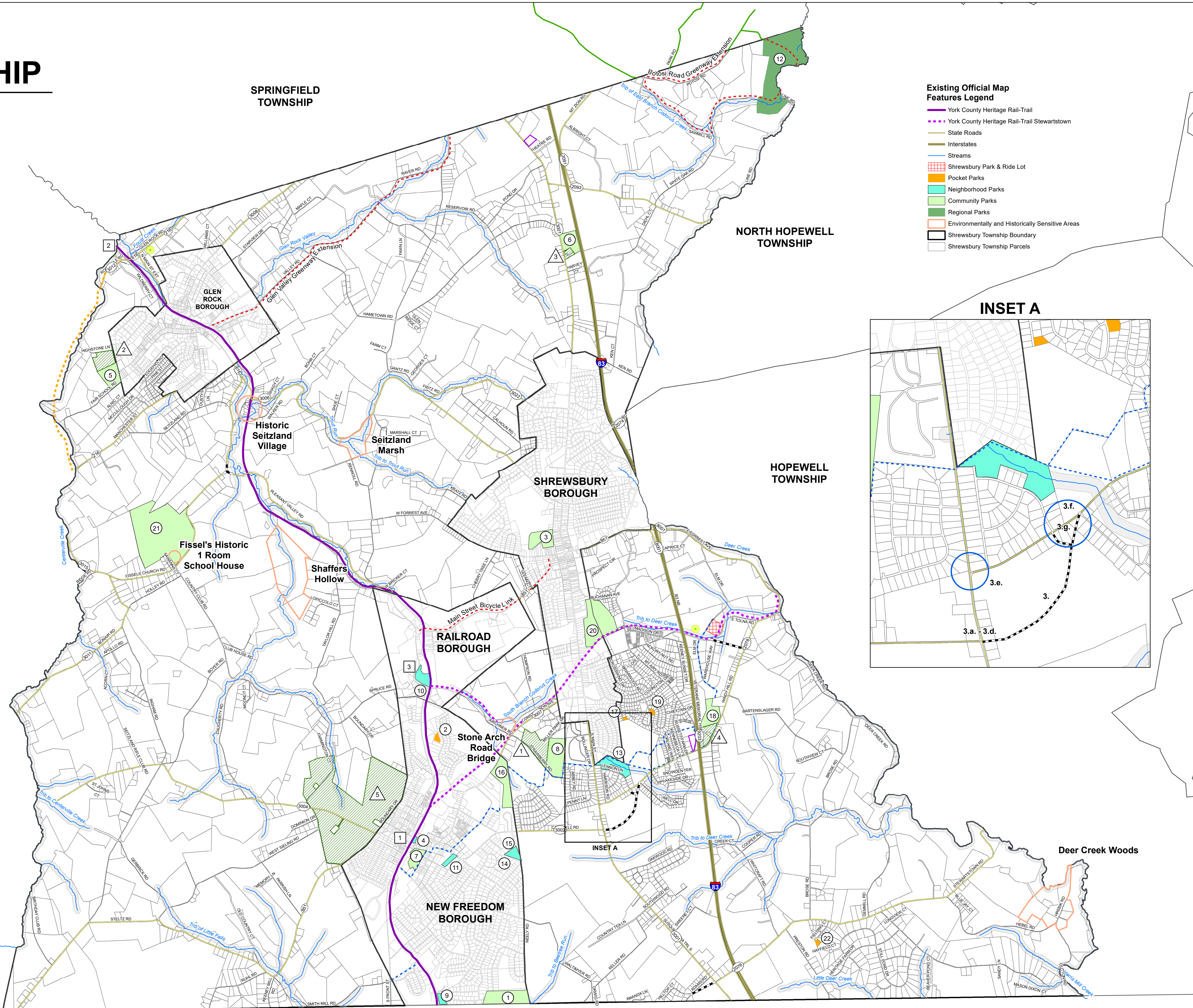
0 900 1,800 3,600 5,400 Feet



- Notes:
1. Areas and features shown on the Official Map outside of the jurisdictional boundaries of the Township are shown on the Official Map for informational purposes only.
 2. Locations identified in the Existing Conditions Legend are for informational purposes only.

CODORUS TOWNSHIP

PENNSYLVANIA
MARYLAND



Existing Official Map Features Legend

- York County Heritage Rail-Trail
- York County Heritage Rail-Trail Stewartstown
- State Roads
- Interstates
- Streams
- Shrewsbury Park & Ride Lot
- Pocket Parks
- Neighborhood Parks
- Community Parks
- Regional Parks
- Environmentally and Historically Sensitive Areas
- Shrewsbury Township Boundary
- Shrewsbury Township Parcels

INSET A

